

ROBERT'S REPORT

from President Bob Haarman

THANKS FOR YOUR SUPPORT!!!

Another great year at the lakes and river is ending and a new one coming. Your membership is crucial as ELRA goes forward.

The ELRA Lake Management Plan was approved and will be available in hard copy or on CD. The plan will be reviewed from time to time and changed when deemed appropriate by the Board of Directors.

ELRA was awarded \$1,600 in grant dollars from the Initiative Fund as a result of the completion of our plan. Among other things, the plan called for stocking walleyes in Lake Mary. As a result, over 4,000 fingerlings were purchased and put in the lake November 2nd, 2006. Lake Emily is stocked by the DNR because it has a public access.

Lakeshore restoration demonstrations occurred again this year. With that thought, I cannot emphasize enough the belief your Board and Committees have about keeping half the distance from our lake homes to the water (the shoreland impact zone) free of fire pits and in as natural a state as possible. It's probably the single most important thing we can do as a shore land owner to improve water quality, reduce algae and benefit the fishery.

Thank you again for your support and a Happy New Year to you the membership, the crucial membership.
Bob Haarman

Inside this issue:

<i>The Jacobson Restoration</i>	2
<i>Walleyes by the Thousands</i>	3
<i>Experimental Shoreline Stabilization Project</i>	3
<i>Development of the "Pug" Hole</i>	4
<i>Did you know...Life Span of Commonly Discarded Litter</i>	4
<i>New Website = User Friendly</i>	4
<i>Grants Available for Emily Shoreland Property Owners</i>	5
<i>More Shoreline Grants</i>	5

In this newsletter...

ELRA Board of Directors

...you will see much information on Shoreline Restoration because:

- More and more funds are available to shoreline property owners for improvement to their lakeshore.
- More people are educated about how our property affects a lake
- More people want to be good stewards of their lake.
- More people are enjoying the wildlife of the native shoreline.
- More people are longing for that "up-north" look that brought us here in the first place.



In 2005 we had a restoration done on the west end of Lake Mary. This summer a large restoration took place on the north shore of Lake Mary (see article). In addition, the DNR has an experimental shoreline erosion project going in on Lake Mary, to be completed spring of 2007. So, kudos to the people that have taken it upon themselves to do the work. You may get information about the first steps in improving your shoreland by contacting:

Volunteers for Healthy Landscaping

Co-Chairs:	Bonnie Fairchild	218.763.2762
	Jane Schulte	218.763.3587

The Jacobson Restoration

By Audrey Jacobson

We have been asked to share the process concerning the lakeshore work that has been done on our property. We believe that part of our lakeside yard had once been wetlands and had been filled in before the new rules were in place. Because we had sod (with shallow roots) in the whole yard, an existing ice ridge continued to move inland more each year. To date, we have lost about 5 feet of lakeshore, the ice ridge has grown taller, undercutting continues, and the trees along the shoreline are tilting. We knew it was important that we look for a way to eliminate the erosion problem or, at least, slow down the progress. Finding out "how" to do this was the challenge.

We talked to numerous representatives from Soil Water Conservation District (SWCD), Minnesota Extension Service and the DNR. No one had the "silver bullet" to solve our erosion problem. We got a bid from a professional landscaper but found it very expensive with no guarantees. The MN Extension Service referred us to the DNR person involved with the LCMR Grant and the DNR website. We found the DNR web site very unfriendly and did not obtain much help, but the individual involved with the LCMR grant came see our property fall, 2005. She helped us write an application for the LCMR Grant, which included a "plan." We needed to plant deep-rooted native plants that would stabilize the yard and hopefully decrease the inward movement of the ice ridge. We were quite hopeful, but just before Christmas 2005, we received word that our application was denied. We were very discouraged and considered giving up the effort.

Then, Nancy Brooks, whom we had met while attending a Fifty Lakes Foundation (FLF) sponsored presentation on lakeshore landscaping, contacted us. She explained that FLF was planning a 3-day class in spring, 2006 on lakeshore restoration, given by the MN Extension Service. By attending the class, we would qualify to "apply" for a FLF grant for lakeshore restoration. The class (which will be offered again this spring) is two days of formal classroom during which the participants learn the benefits and process of lakeshore landscaping with native plants,



with the third day being a hands-on planting.

Shortly after we registered, we were asked if our property could be used for the planting class. We readily agreed. That meant before the class began, we had to complete most of the topics covered in the 2 days of classroom, ahead of the rest of the class, so our time and energy commitment was extensive. The entire area had to be planned and prepared, including killing off the existing grass and covering the area with 2 inches of mulch. While Gordy was planting 150 bare-root plants we ordered from SWCA, and doing the yard prep, I was selecting native plants according to type of soil, moisture needs and amount of sun required. Plant height,

color, bloom time and availability (from native plant growers) were then considered. We had help and encouragement from Bonnie Fairchild (Volunteers for Healthy Landscaping), and Eleanor Burkett, Extension Service Educator (a delight to work with). Both are committed to a healthy environment. In June, 22-25 people arrived to plant at

our home. Everyone was cheerful and enthusiastic as we planted about 1100 plants in gentle rain. The plants loved it and did very well. It was exciting to see those tiny, little plants growing during the summer. We have been told to weed and water for 3 years. After that, the plants are self-sufficient and take care of themselves.

As I mentioned earlier, we were eligible to apply for the Fifty Lakes Foundation Grant and this time we did receive the grant. The donated labor of many of the class members plus our wonderful neighbors was frosting on the cake.

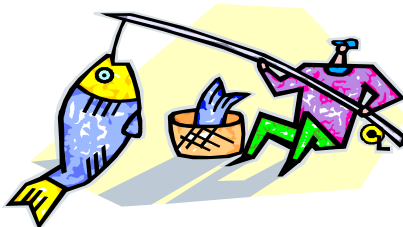
In closing, we want to encourage everyone to continue to pursue lakeshore problems that you may have. More than once we were discouraged, but with support from others and a firm desire to do the right thing for our lake and shoreline, things finally fell into place. In other words, don't give up if you have a desire to improve your lakeshore and contribute to a healthier lake.

(Look for more on the Jacobson's undercutting problem in Heather Baird's article)

WALLEYES BY THE THOUSANDS by Doug & Bea Rhode

On November 4, 2006 the first part of our lake management plan was finally realized. Why is that day so special? Well, that's the day that some members of the ELRA board watched as 125 pounds of walleye fingerlings were poured into Lake Mary. That amounts to around 4,000 walleyes, averaging about 5 inches in length. The survival rate for fish this size in Lake Mary should be between 70-80% depending upon the number of predator fish (bass, northerns & walleyes) present in the lake.

If you ever have wondered what happens to your lake association dues and the grant money we worked for, this is where \$1,750.00 of it went. It is ELRA's intent to continue to stock walleyes as long as we see results and YOU help us with the money to pay for it. This could be the FIRST time



Lake Mary has been stocked with walleyes but with your continued help & support, it won't be the last.

The walleyes were purchased from Bosek Bait Company in Garfield, MN. It was a pleasure dealing with them. Not only did they give us a great deal but delivered on time. Something of a rarity these days. I was curious how this business works so I asked if I could visit and see the operation. Jim was more than willing for me to do so. After enjoying a tour of the facilities with Mrs. Bosek, I was taken out to one of the ponds where the walleyes are raised & met with Jim where he explained the process they used to get the walleyes from the pond to the holding tanks for shipment. It was very interesting and informative. I found the whole operation to be top notch.

Experimental Shoreline Stabilization Project

Heather Baird, MN DNR

This past summer the University of MN Extension held a shoreline planting workshop (3rd of a 3-session class) on the Lake Mary property of Gordon and Audrey Jacobson. Eleanor Burkett taught the class. The landowners designed the project and purchased the plants and supplies needed for it. The planting was completed with the help of class members, friends, and neighbors. However, there were other issues to deal with that an upland planting would not address.

There was an ice ridge that had a deep undercut bank like so many of our shores on lakes in Crow Wing County. MN DNR employees, Heather Baird and Kevin Woizeschke, were contacted by Eleanor to visit the site and provide some technical assistance. Scott Lucas from Crow Wing County also visited the site. The ice ridge itself contained many native plants and trees, but was growing higher and moving inward each year. In addition, in some places the bank was undercut by as much as a few feet.

The "crew" felt that this problem was common along our lakes and the Jacobson's shoreline was a good site for an experiment in stabilization. The Jacobson's agreed to let us try this stabilization technique—with no guarantees (although we really hope it works)! Eleanor and Heather worked on the design and the MN DNR Shoreline Habitat Program provided some funds to try out it out. Many volunteers made the project possible as the installation of the erosion control material was time consuming and physical work. We will be willow staking the fabric where we filled in the undercut bank this fall and planting more plants next spring

Stay tuned to see how the experiment holds up this winter! Thank you to all who helped make this project possible!



Tires Removed from Emily Lake

ELRA would like to extend thanks to Scott Lucas of Crow Wing Coil & Water Conservation District for arranging to have a large number of the tires removed from Emily Lake.

Development on the "Pug Hole"

As many of you already know, a preliminary plat has been applied for on the area called the "Pug Hole", the little bay where the river exits Lake Mary. There has been discussion as to whether this area is "river" or "lake". River lots require minimum lot widths 150 ft wide with 100 ft setbacks and General Development lakes (Lake Mary) require minimum 100 ft lots with 75 ft. setbacks. For many years lake and river property owners and other city residents have considered this water to be the Little Pine River. However, there appears to be conflicting information indicating both classifications. At this point the City of Emily is sending a letter to the DNR requesting a meeting and a clear ruling on the classification of these waters by the as required by state law.

Did You Know?...Life Span of Commonly Discarded Litter

(Information from Environmental Educator, Fall 2006)

<u>Item</u>	<u>Decomposition Time</u>
Glass Bottle	Approx. 1 million years
Plastic 6-pack cover	450 years
Aluminum can	200-500 years
Rubber Boot sole	50-80 years
Leather	up to 50 years
Nylon fabric	30-40 years
Plastic film container	20-30 years
Painted wooden stake	13 years
Plastic Bag	10-20 years
Plastic coated paper	5 years
Wool clothing	1-5 years
Cigarette butt	1-5 years
Cotton rag	1-5 months
Orange or banana peel	2-5 weeks



New Website = User Friendly



Thanks to Ken Scribner, ELRA will have a new and improved website next spring. Darlene Wieseler will continue being our webmaster using this new program.

We will be able to access it directly, and by going through MN Waters. On the program Ken is setting up, pictures, letters, newsletters, meeting minutes, and agendas will be easily accessed. Forms (membership) can be downloaded. There will be a new email address for questions and comments. Check the spring newsletter for details.

Grants Available for Emily Shoreland Property Owners

(Fifty Lakes Letter-September 2006)

The Fifty Lakes Foundation (FLF) will again sponsor a Shoreline Restoration seminar series in 2007.

LF has planned three instructional hands-on seminars to instruct and help individuals to understand what is involved with shoreline restoration and how to go about it. The seminars will be put on by the MN Extension Service and lead by Eleanor Burkett. The cost of the 3-part series will be \$20.00.

Seminar #1—Understanding Restoration-Saturday, May 5, 2007, 8:30Am-4:00PM. This seminar, at the FLF clubhouse, will introduce shoreline restoration and assist the individual to create a simple design plan for his/her lakeshore

Seminar #2—Understand Native Plants-Saturday, May 19, 2007, 8:30 AM-4:00PM. This seminar, at the FLF clubhouse, will review the individual's design plan, introduce native plants and illustrate planting instructions.

Seminar #3—Planting-mid-June, 2007 (date, location, and time to be determined in Spring, 2007). This will be a hands-on planting experience at the shore land of one or two of our seminar participants. You will be able to participate in the planting of the native plants and understand the techniques to provide for a successful result.

Individuals who should consider attending would include:

Individuals interested in the conservation of lake water quality

Individuals who want to do restoration project in 2007 or 2008

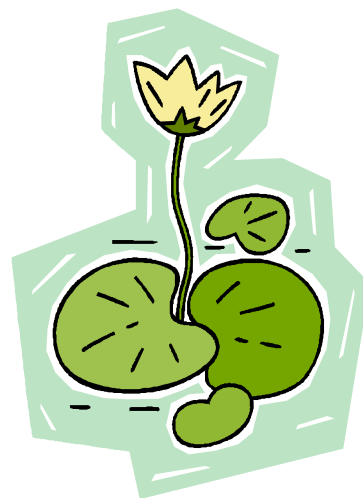
Individuals who are considering a restoration project in the future

This DNR grant is to assist local area lakeshore owners in the funding of their shoreland restoration projects. The Fifty Lakes Foundation is the sponsor and the implementer of the Grant. This Grant is officially known as part of the Conservation Partner Grant Program, which is funded by the Minnesota Environmental Trust Fund. The DNR Grant will provide for 50% reimbursement (up to some max.) of plants and materials as well as some allowance for labor costs.

This DNR Grant covers a large area of lakes from Outing, to Emily, to Crosby, to Crosslake, to Pequot Lakes, to Pine River.

To obtain the registration form and/additional information: Contact Nancy Brooks (218) 763-3622.

NOTE: Registration is required and space limited.



More Shoreline Grants

In addition to the Fifty Lakes Foundation shoreline , there are others available to Emily Shoreline owners. There is usually some match of dollars spent, sometimes up to 75%.

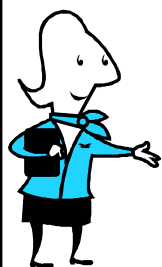
To learn of the different grants you can contact:

Heather Baird, Shoreline Habitat Specialist

Division of Fish & Wildlife

heather.baird@dnr.state.mn.us

(218) 855-5072





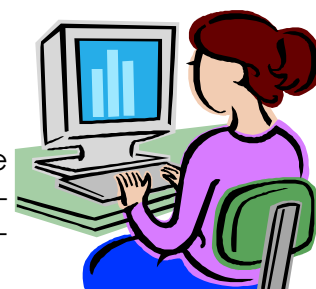
P.O. Box 111
Emily, MN 56447

REMEMBER TO CHECK OUT THE WEBSITE!

The Emily Lakes and River Association has a website,

<http://www.mnlakes.org/ELRA/>

where you can find information about the Calendar of events, the Board of Director' meeting agendas and meeting minutes, Membership Information and Projects. The ELRA will use this forum and its Newsletters to keep you informed, until our new website is ready!



Emergency Phone Numbers

TIP—for fish and game violations: 1-800-652-9003 (callers may remain anonymous)
Conservation Officer (located in Cross Lake) 1-500-730-0985 (cell) / 1-218-692-5017 (home)
Please use these numbers if you see any problems on our lakes/river.

Board of Directors

Ken Scribner, President	218-763-3658	Doug Rhode	218-763-2159
Bob Haarman, Vice President	218-763-3658	Bonnie Fairchild	218-763-2762
Tom Hintz, Treasurer	218-763-2355	Roger Olson	218-763-6363
Joann Luxford, Secretary	218-763-3135	Gordy Jacobson	218-763-2234